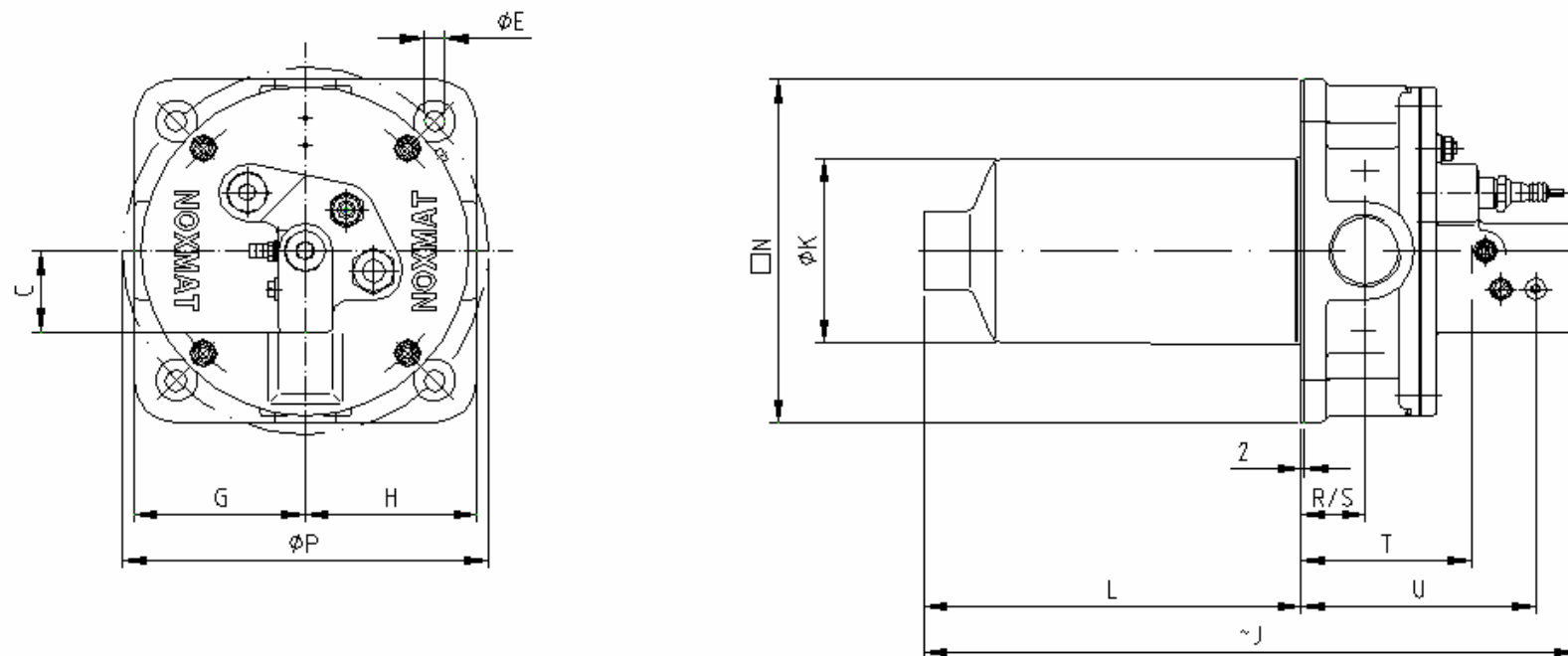


# High-Velocity Burner NOXMAT® HGBE

## Main dimensions / Connection sizes



Burner size	Main dimensions									Connection sizes							
	C mm	E mm	G mm	H mm	J mm	K mm	L <sup>[1]</sup> mm	N mm	P mm	Combustion air		Cooling air		Purge air		Fuel gas	
										R mm	Zoll	S mm	Zoll	T mm	Zoll	U mm Zoll	
HGBE 15	72,5	14	80	80	600	59	200/250/300/400	160	170	34	G3/4	34	<sup>[2]</sup>	87	G3/8	132	Rp1/2
HGBE 25	77	14	87,5	87,5	560	71	200/250/300/400	175	190	34	G1	34	<sup>[2]</sup>	92	G3/8	137	Rp1/2
HGBE 50	77	14	97,5	97,5	580	94	200/250/300/400	195	210	40	G1.1/2	40	<sup>[2]</sup>	107	G3/8	152	Rp1/2
HGBE 100	53	14	112,5	112,5	580	121	200/250/300/400	225	240	40	G1.1/2	40	<sup>[2]</sup>	110	G3/8	152	Rp1/2
HGBE 200	70	14	142,5	142,5	650	171	---/250/300/400	285	310	56	G2.1/2	56	<sup>[2]</sup>	157	G3/8	215	Rp3/4

<sup>[1]</sup> Other lengths also possible

<sup>[2]</sup> Bore optional

<sup>[3]</sup> Maximum length at L=400mm